



Setting up and Automating a MS Dynamics AX Job in JAMS

Introduction	1
Creating a User for the AX Job Execution	2
Setting up the AX Job	4
Create a New folder.....	4
Adding a new Dynamics AX Job using the JAMS Definition Wizard	4
Adding a User to the AX Job Properties	6
Available AX Job Parameters	7
Generic to All Job Types	7
Report Job Type Specific Parameters	8
Job Specific Parameters.....	9

Introduction

JAMS natively supports automation using many leading business applications, including Microsoft Dynamics AX solutions. Add-ons for these and other preferred applications are selected during the JAMS installation process. Once the add-on is enabled, users can create, manage, deploy and monitor almost any kind of Dynamics AX job.

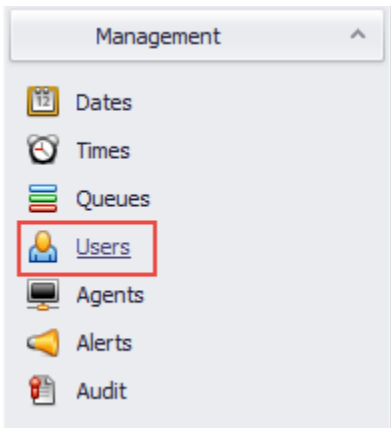
The JAMS add-on for Microsoft Dynamics AX allows users to initiate Dynamics AX processes and take advantage of monitoring and report distribution capabilities using JAMS scheduling software.

When the add-on runs, it initiates communication with and instructs Dynamics AX to schedule, execute AX jobs, batch jobs and reports as configured in JAMS. The process can then be monitored, canceled and restarted in either Dynamics AX or JAMS.

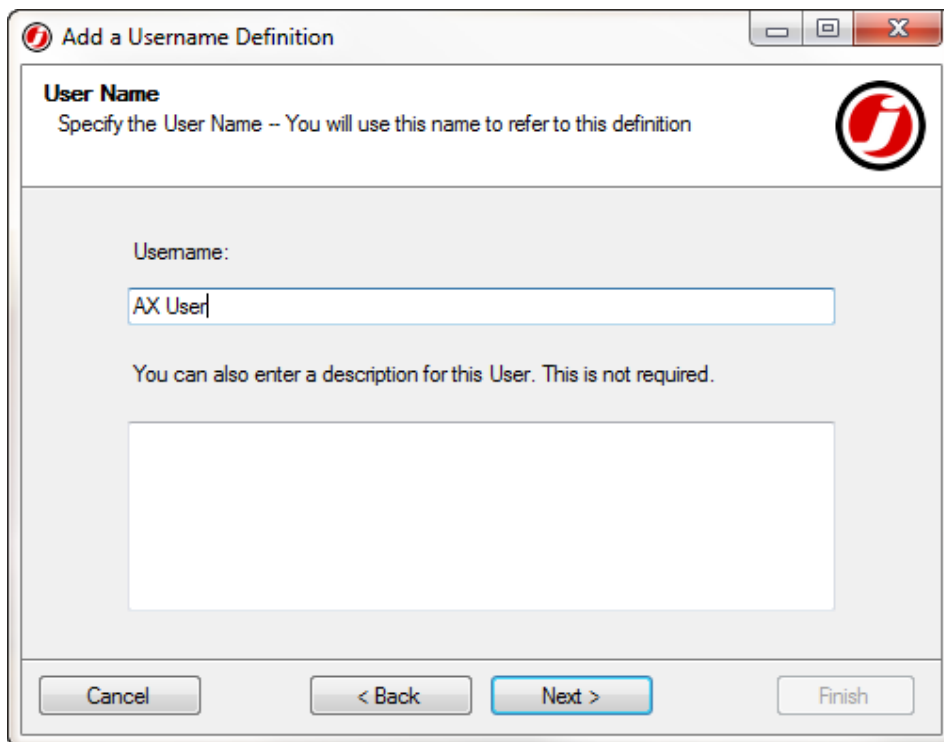
Creating a User for the AX Job Execution

JAMS also uses a wizard step through when adding new users. Follow the steps below to quickly incorporate new JAMS users.

1. From JAMS select the **Users** link located in Management section of Shortcut Bar.

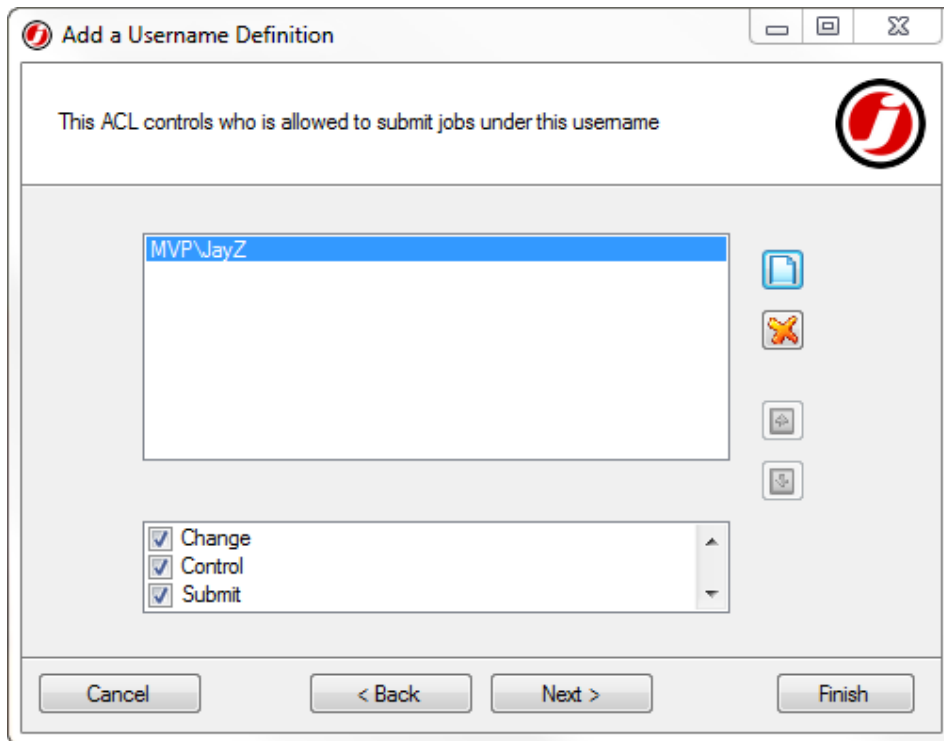


2. Click the green **Add** button on the Ribbon Bar.
3. The JAMS User Name Definition Wizard opens.
4. Click the **Next** button to access the Add a User Name Definition screen. Enter a user name (e.g., AX User) and an optional description, then select **Next**.



5. The Logon As screen opens. Leaving the field blank will cause JAMS to default to the 'AX User' (that was entered in the previous screen) or alternatively, enter the user name to be used during authentication. Click **Next** to move to the next screen.

6. The Password screen appears. Enter and confirm the new password. Select the **Next** button to move to the ACL control screen.
7. Add the ACL for any user that is already setup in AX. Please note: this user must have login rights as well as rights to execute items that will be added in later JAMS jobs. This may require setting up additional users based on their access rights in the AX product.



8. Click **Next** to open the last wizard screen and click the **Finish** button to complete the user name setup. Select the link to view the next topic: [Setting up the AX Job](#).

Setting up the AX Job

Users must define and enter specific attributes in order to successfully run a job in JAMS.

Once a job has been properly defined it can either:

1. Be submitted to run on demand or . . .
2. Set up to run automatically using a schedule.

Note: A single JAMS job can execute many other jobs. A schedule can exist on different machines to allow for separate management tasks and eliminate single points of failure.

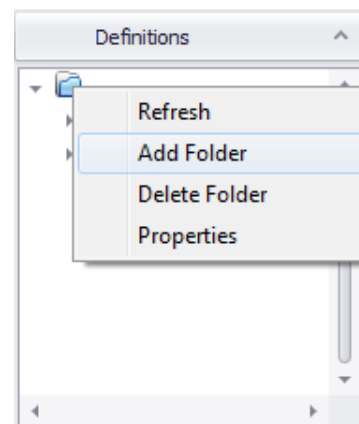
Create a New folder

The first step is to create a new folder or alternatively use an existing folder directory to locate similar JAMS jobs.

Note: Creating new or using existing folders in JAMS is optional.

To create a new JAMS definitions folder follow the steps below:

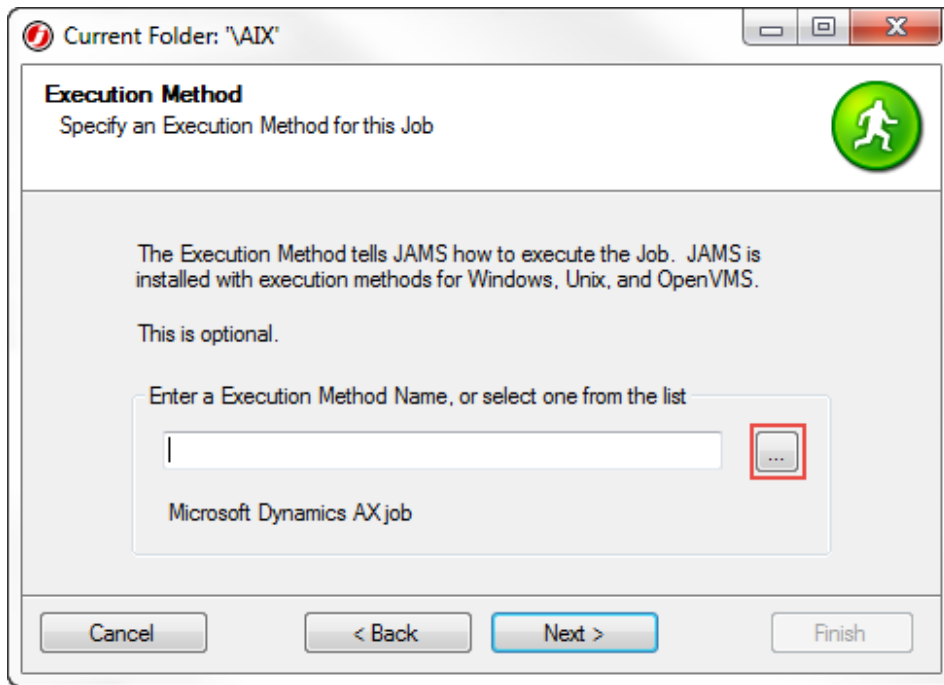
1. In the JAMS Definitions list on the Shortcut Bar right-click the root folder and choose the **Add Folder** command.
2. This action opens the JAMS Folder Definition Wizard. With the wizard open, simply follow the steps to specify a new folder name. If required, include any notification parameters for that folder. Click the **Finish** button to add the new folder to the Definitions Navigator list.



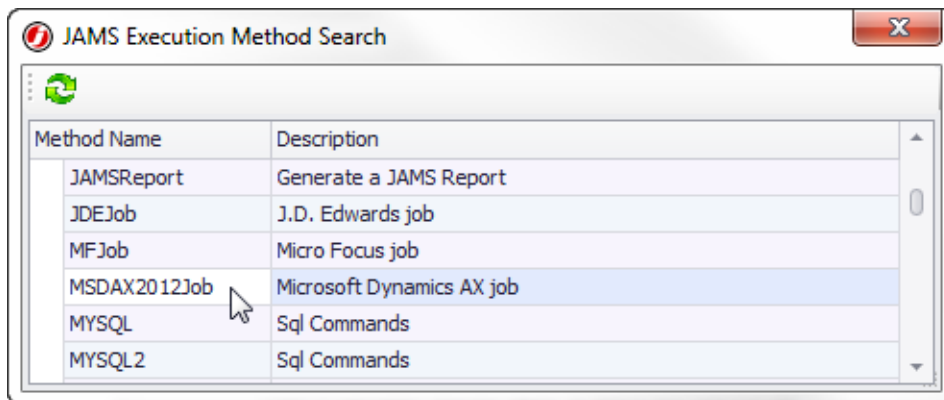
Adding a new Dynamics AX Job using the JAMS Definition Wizard

After creating a folder, you can quickly set up a Dynamics AX job using the JAMS Job Definition Wizard. Follow the steps below to create and define a JAMS/AX job:

1. From the new or an existing folder, click the cursor within the larger Job list window to activate the green **Add** button on the Ribbon Bar.
2. Select the green **Add** button to open the JAMS Job Definition Wizard's opening screen. Click the **Next** button to access the Job Name screen. Enter a unique job name and job description and click the **Next** button.
3. The Job Execution Method screen opens. Select the **File Browser** button located to the right of the field name.



4. The JAMS Execution Method Search screen opens. Double-click the AX Execution method from the list.



5. The Execution Method screen returns displaying the selected method.
6. Click **Next** to open the Notification E-mail Addresses page. If required, specify any user email address(s) that should receive job notifications when problems occurs.
7. Choose the **Next** button to move to the verify user account wizard screen. Use the pull down to select the user account to be associated with this [AX] job.
8. Click **Next** to move to the Source wizard screen. Enter the appropriate values.

Company: Select the AX company ID for this job.

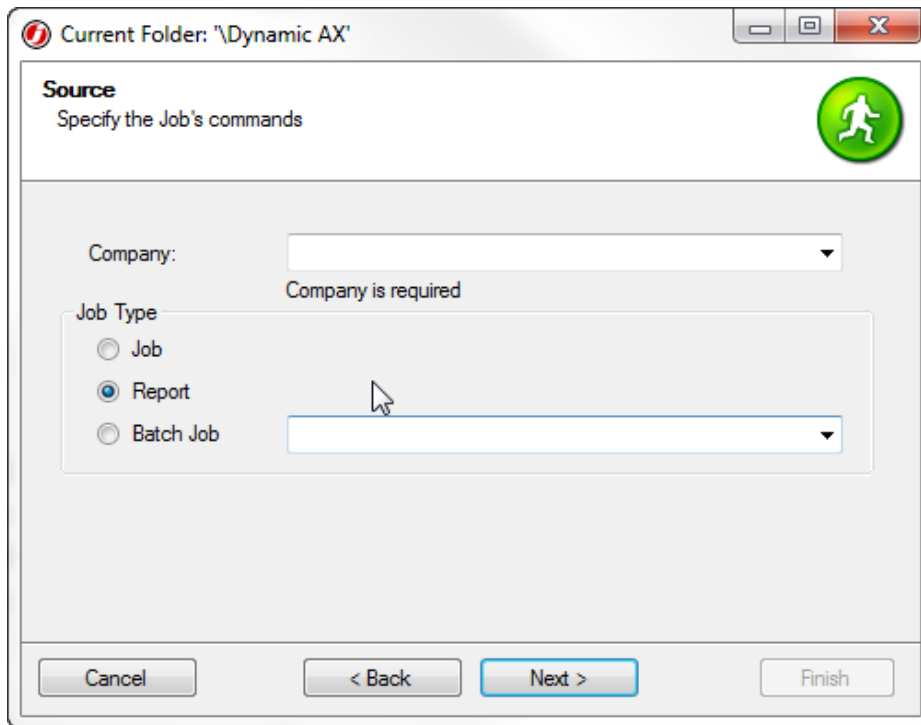
Job Type: Choose the appropriate radio button.

Job: Select from a list of defined jobs in the AX AOT

Report: Choose from a list of reports that are on an AX menu.

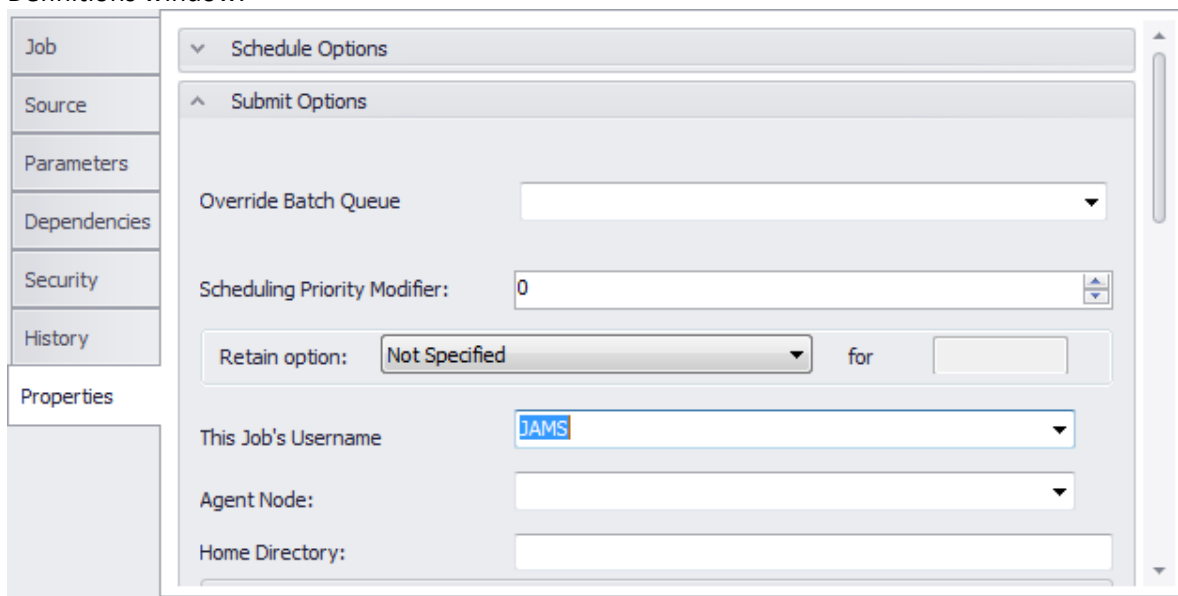
This type of job can have many defined parameters. Refer to the topic: [Report Job Type Specific Parameters](#).

Batch Job: Choose from the list of batch Jobs (by name) that have been created in AX. A batch job contains all the pertinent information to execute on its own.



Adding a User to the AX Job Properties

Once the AX Job has been created, open its Job definitions and select the **Properties** tab and then open the **Submit Options** section. Select a **Username** from the dropdown list and then close out of the Job Definitions window.



Available AX Job Parameters

Generic to All Job Types

MSDAXIncludeLog

MSDAXIncludeDebugLog

Language: Specify the language setting to be used when logging into AX Job.

ObjectServer: Specify the object server setting to be used when logging into AX Job.

Configuration: Specify the object server setting to be used when logging into AX Job.

Report Job Type Specific Parameters

Query: Specify the name of a query to be applied to the report before rendering it.
This Query is setup in AX

Destination: Specify where the report should be sent once rendered

Possible Values

Value	Meaning
1	Printer
3	Email
4	File
Printer	Printer
Email	Email
File	File

Default value:

1. Printer

FileFormat: Specify the format of the file being exported by processing a report

Possible Values

Value	Meaning
ASCII	Ascii
RTF	Rich Text Format
HTML	HTML
PDF	PDF
PDFEMBEDFONTS	PDF with embedded fonts
TEXTUTF8	Text in UTF8 encoding
1	Ascii
2	Rich Text Format
3	HTML
4	PDF
5	PDF with embedded fonts
6	Text in UTF8 encoding

Default value:

1. Ascii

FileName: Specify the name of the file the report will be exported to when the destination is set to File.

PrinterName: Specify the printer name report will be printed when the destination is set to Printer.

FirstPage

Specify
Default
0

LastPage

Specify
Default
0

Copies

Specify
Default
0

Subject: Specify the subject of an Email. Used when destination is set to Email.

To: Enter an email address to send the report.

CC: Enter an email address to send the report.

Job Specific Parameters

Parm: Specify a single parameter to be sent to a Job. **Note** the job in AX must be designed in such a way to accept a 'parm'.